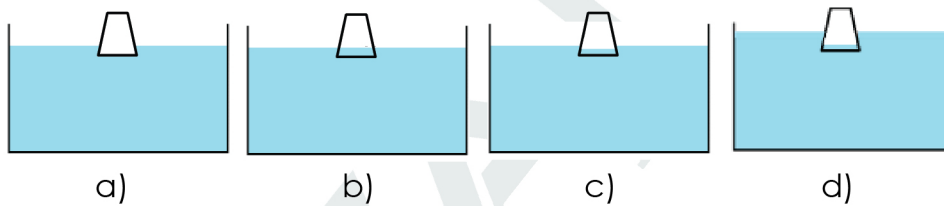


# VANDA SAMPLE QUESTIONS

## PRIMARY 3 AND 4

### Question 1

If an empty cup is flipped upside down and pushed into a container of water, which option below shows what will happen to the cup and the water in the container?



### Question 2

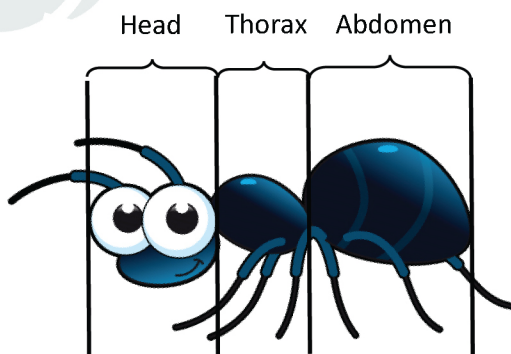
Around 1 billion birds die by colliding with clear window glass in the United States. On the other hand, humans do not collide with clear window glass as often as birds. The human and bird's eyes can see objects because light is reflected from an object to the eye. Which of the statements below is true?



- a) Birds cannot see glass while Humans can.
- b) Birds have bad eyesight.
- c) Light pass through the clear glass which makes it hard for Humans and birds to see.
- d) The light reflected on the glass affects the bird's eyes.

### Question 3

The body of an insect is divided into 3 parts.



Which of the following statement(s) is/are true about insects?

- I. The spider's body has also 3 parts and it is considered as an insect.
- II. The exoskeleton (hard outer covering) protects the soft body of the insect.
- III. Insects with hair are classified in the sub groups of Mammals.
- IV. Most insects reproduce by giving birth
- V. Insects that can breathe underwater are also classified under Amphibian Insects.

- a) II only
- b) I, II and IV
- c) II, III and V
- d) I, II, III, IV and V

Use the information below to answer Question 4 and 5

The life cycle of a butterfly consists of 4 stages: Adult, Egg, Larva (Caterpillar) and Pupa. The eggs are laid by a female butterfly on a suitable plant and it takes around 4 to 5 days to hatch into a larva. The time taken for the caterpillar to stay in the pupa is 14 days. At the adult stage, the butterfly only eats nectars from flowers.

John place a male and a female caterpillar in a container. He place the same amount of fresh leaves in the container daily.

#### Question 4

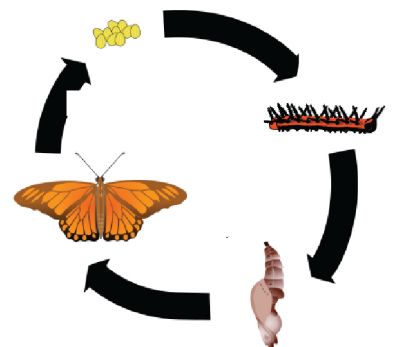
What would most likely happen in the container after 13 days?

- a) There will be one more baby caterpillar.
- b) There will be a total of 2 caterpillars in the container.
- c) There will be a total of 3 butterflies in the container.
- d) Eggs can be seen on the leaf.

#### Question 5

What would mostly likely happen in the container after 100 days?

- a) The whole containers will be filled with many butterflies.
- b) There will not be any more butterflies or caterpillars alive.
- c) There will be an equal number of butterflies and caterpillars.
- d) The container will be filled with many caterpillars and very few butterflies.



Answer for Q1 to Q5 respectively: d,c,a,b,b